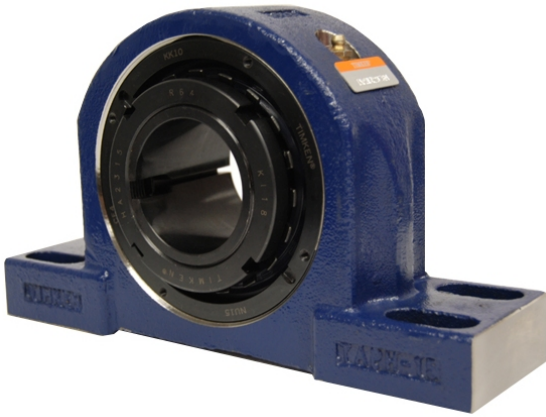


# ing Housed Units-Tapered Adapter Four-Bolt Pillow Block | TAPK20K307S



Bearing No. TAPK20K307S

|                           |  |
|---------------------------|--|
| Weight                    | Imperial   |
| Bearing Number            | 4.24   |
| Housing Construction      | 2.85   |
| UPC Code                  | 70.0 lb31.8 Kg   |
| Shaft Size Type           | 0883450131674<br>0883450131681<br>0883450131704<br>0883450131711<br>0883450131728<br>0883450131735<br>0883450131742 08 |
| Full Timken Part Number   | 0.0040 in0.102 mm  |
| Locking Style             | 3-7/16 in  |
| Y2 - Geometry Factor      | 0.0043 in0.109 mm  |
| Y1 - Geometry Factor      | 0.0055 in0.140 mm  |
| Shaft Tolerance           | 0.0020 in0.051 mm  |
| Shaft Size                | 2000 rpm   |
| Pre Install Clearance Min | 1200 rpm   |
| Pre Install Clearance Max | 900 rpm  |