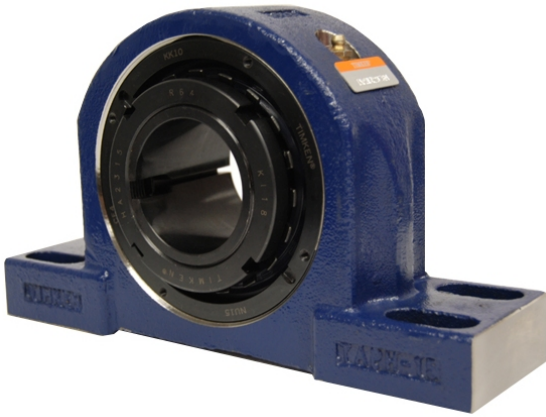


ing Housed Units-Tapered Adapter Four-Bolt Pillow Block | TAPK20K090S



Bearing No. TAPK20K090S

Weight	Metric
Bearing Number	4.24
Housing Construction	2.85
UPC Code	70.0 lb31.8 Kg
Shaft Size Type	0883450131575 0883450131582 0883450131605 0883450131612 0883450131629 0883450131636 0883450131643 08
Full Timken Part Number	0.0040 in0.102 mm
Locking Style	90 mm
Y2 - Geometry Factor	0.0043 in0.109 mm
Y1 - Geometry Factor	0.0055 in0.140 mm
Shaft Tolerance	0.0020 in0.051 mm
Shaft Size	2000 rpm
Pre Install Clearance Min	1200 rpm
Pre Install Clearance Max	900 rpm