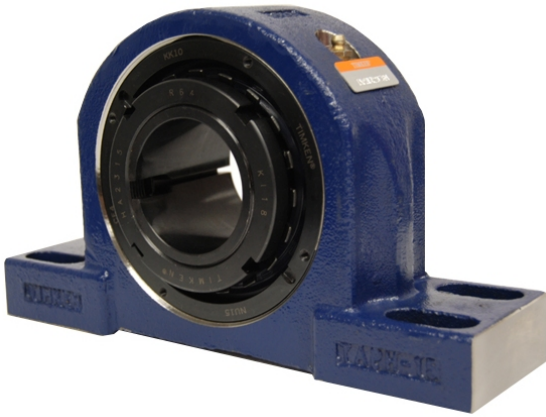


ing Housed Units-Tapered Adapter Four-Bolt Pillow Block | TAPH22K315S



Bearing No. TAPH22K315S

| | |
|---------------------------|--|
| Weight | Imperial |
| Bearing Number | 4.06 |
| Housing Construction | 2.73 |
| UPC Code | 87 lb39.5 Kg |
| Shaft Size Type | 0883450129978 0883450129985 0883450130004 0883450130011 0883450130028 0883450130035 0883450130042 08 |
| Full Timken Part Number | 0.0040 in0.102 mm |
| Locking Style | 3-15/16 in |
| Y2 - Geometry Factor | 0.0053 in0.135 mm |
| Y1 - Geometry Factor | 0.0067 in0.170 mm |
| Shaft Tolerance | 0.0025 in0.064 mm |
| Shaft Size | 1700 rpm |
| Pre Install Clearance Min | 900 rpm |
| Pre Install Clearance Max | 600 rpm |