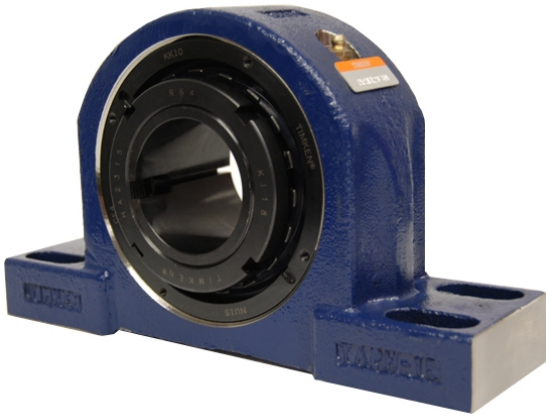


# ing Housed Units-Tapered Adapter Four-Bolt Pillow Block | TAPH13K060S



## Bearing No. TAPH13K060S

Weight	Metric
Bearing Number	4.15
Housing Construction	2.79
UPC Code	25 lb11.3 Kg
Shaft Size Type	0883450128674 0883450128681 0883450128704 0883450128711 0883450128728 0883450128735 0883450128742 08
Full Timken Part Number	0.0030 in0.076 mm
Locking Style	60 mm
Y2 - Geometry Factor	0.0030 in0.076 mm
Y1 - Geometry Factor	0.0037 in0.094 mm
Shaft Tolerance	0.0015 in0.038 mm
Shaft Size	3200 rpm
Pre Install Clearance Min	1800 rpm
Pre Install Clearance Max	1500 rpm