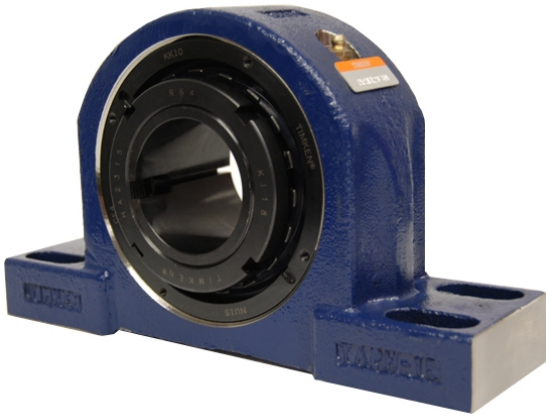


Large Housing Units-Tapered Adapter Four-Bolt Pillow Block | TAPG20K307S



Bearing No. TAPG20K307S

| | |
|---------------------------|--|
| Weight | Imperial |
| Bearing Number | 4.24 |
| Housing Construction | 2.85 |
| UPC Code | 70.0 lb31.8 Kg |
| Shaft Size Type | 0883450127677 0883450127684 0883450127707 0883450127714 0883450127721 0883450127738 0883450127745 08 |
| Full Timken Part Number | 0.0040 in0.102 mm |
| Locking Style | 3-7/16 in |
| Y2 - Geometry Factor | 0.0043 in0.109 mm |
| Y1 - Geometry Factor | 0.0055 in0.140 mm |
| Shaft Tolerance | 0.0020 in0.051 mm |
| Shaft Size | 2000 rpm |
| Pre Install Clearance Min | 1200 rpm |
| Pre Install Clearance Max | 900 rpm |