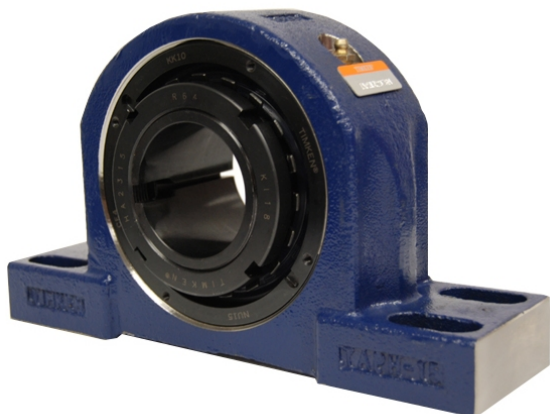


Large Housing Units-Tapered Adapter Four-Bolt Pillow Block | TAPG17K300S



Bearing No. TAPG17K300S

Weight	Imperial
Bearing Number	4.57
Housing Construction	3.07
UPC Code	37.0 lb16.8 Kg
Shaft Size Type	0883450127479 0883450127486 0883450127509 0883450127516 0883450127523 0883450127530 0883450127547 08
Full Timken Part Number	0.0040 in0.102 mm
Locking Style	3 in
Y2 - Geometry Factor	0.0043 in0.109 mm
Y1 - Geometry Factor	0.0055 in0.140 mm
Shaft Tolerance	0.0020 in0.051 mm
Shaft Size	2400 rpm
Pre Install Clearance Min	1400 rpm
Pre Install Clearance Max	1100 rpm