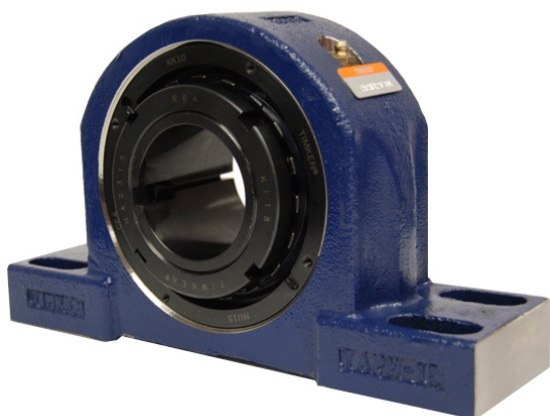


Large Housing Units-Tapered Adapter Four-Bolt Pillow Block | TAPG15K208S



Bearing No. TAPG15K208S

Weight	Imperial
Bearing Number	4.67
Housing Construction	3.14
UPC Code	29 lb13.20 Kg
Shaft Size Type	0883450127172 0883450127189 0883450127202 0883450127219 0883450127226 0883450127233 0883450127240 08
Full Timken Part Number	0.0035 in0.089 mm
Locking Style	2-1/2 in
Y2 - Geometry Factor	0.0037 in0.094 mm
Y1 - Geometry Factor	0.0047 in0.119 mm
Shaft Tolerance	0.0017 in0.043 mm
Shaft Size	2900 rpm
Pre Install Clearance Min	1600 rpm
Pre Install Clearance Max	1300 rpm