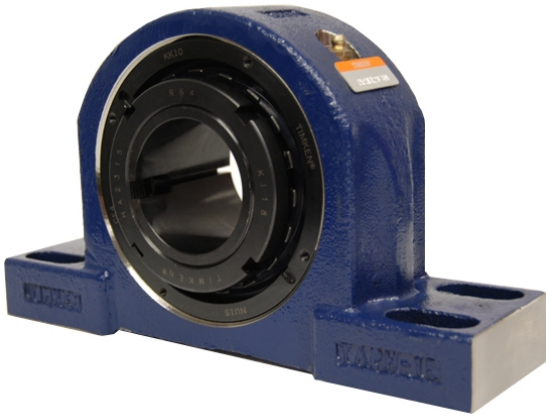


loyal g Housing Units-Tapered Adapter Four-Bolt Pillow Block | TAPG17K075S



Bearing No. TAPG17K075S

Weight	Metric
Bearing Number	4.57
Housing Construction	3.07
UPC Code	37.0 lb16.8 Kg
Shaft Size Type	0883450127271 0883450127288 0883450127301 0883450127318 0883450127325 0883450127332 0883450127349 08
Full Timken Part Number	0.0040 in0.102 mm
Locking Style	75 mm
Y2 - Geometry Factor	0.0043 in0.109 mm
Y1 - Geometry Factor	0.0055 in0.140 mm
Shaft Tolerance	0.0020 in0.051 mm
Shaft Size	2400 rpm
Pre Install Clearance Min	1400 rpm
Pre Install Clearance Max	1100 rpm