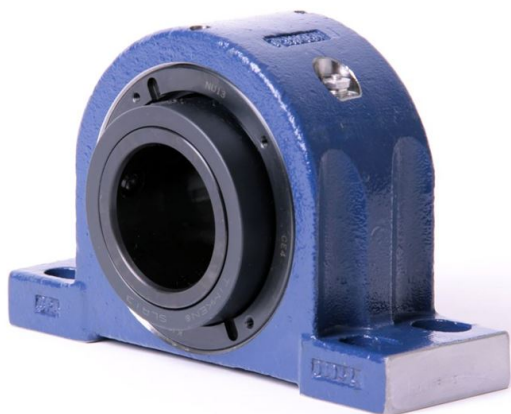


# loyal Housed Units-Single Concentric Four-Bolt Pillow Block | QAPR15A212S



## Bearing No. QAPR15A212S

Weight	Imperial
Bearing Number	4.67
Housing Construction	3.14
UPC Code	27 lb12.2 Kg
Shaft Size Type	0883450333245 0883450333252 0883450333269 0883450333276 0883450333283 0883450333290 0883450333306 08
Full Timken Part Number	0.0020 in0.051 mm
Locking Style	2-3/4 in
Y2 - Geometry Factor	0.0020 in0.050 mm
Y1 - Geometry Factor	0.0031 in0.080 mm
Shaft Tolerance	2900 rpm
Shaft Size	1600 rpm
Pre Install Clearance Min	1300 rpm
Pre Install Clearance Max	Single Concentric