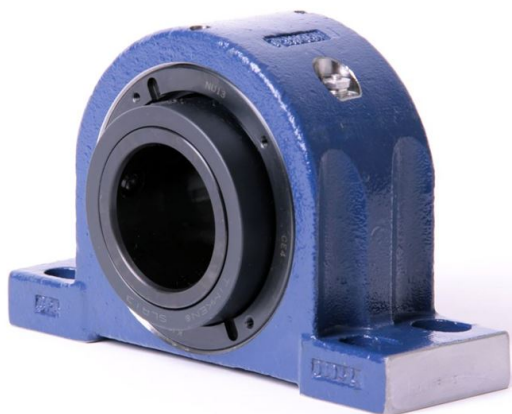


# loyal Housed Units-Single Concentric Four-Bolt Pillow Block | QAPR13A060S



## Bearing No. QAPR13A060S

Weight	Metric
Bearing Number	4.15
Housing Construction	2.79
UPC Code	20 lb9.10 Kg
Shaft Size Type	0883450333122 0883450333139 0883450333146 0883450333153 0883450333160 0883450333177 0883450333184 08
Full Timken Part Number	0.0015 in0.038 mm
Locking Style	60 mm
Y2 - Geometry Factor	0.0016 in0.040 mm
Y1 - Geometry Factor	0.0026 in0.065 mm
Shaft Tolerance	3200 rpm
Shaft Size	1800 rpm
Pre Install Clearance Min	1500 rpm
Pre Install Clearance Max	Single Concentric