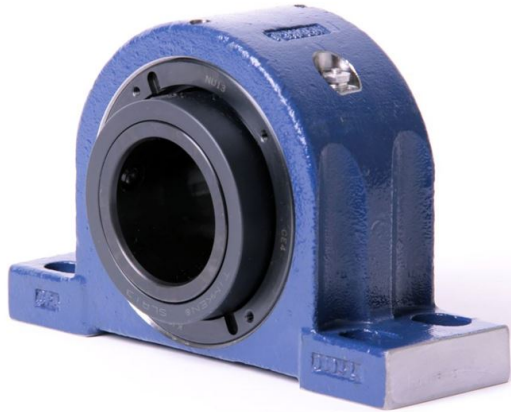


loyal g Housing Units-Single Concentric Four-Bolt Pillow Block | QAPF15A300S



Bearing No. QAPF15A300S

| | |
|---------------------------|------------------------------------------------------------------------------------------------------------------------|
| Weight | Imperial |
| Bearing Number | 4.67 |
| Housing Construction | 3.14 |
| UPC Code | 27 lb12.2 Kg |
| Shaft Size Type | 0883450046305 0883450046312 0883450046336 0883450046343 0883450046350 0883450046367 0883450046374 08 |
| Full Timken Part Number | 0.0020 in0.051 mm |
| Locking Style | 3 in |
| Y2 - Geometry Factor | 0.0020 in0.050 mm |
| Y1 - Geometry Factor | 0.0031 in0.080 mm |
| Shaft Tolerance | 2900 rpm |
| Shaft Size | 1600 rpm |
| Pre Install Clearance Min | 1300 rpm |
| Pre Install Clearance Max | Single Concentric |