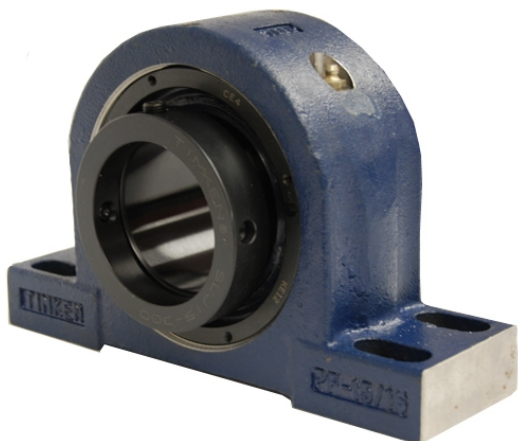


# royal Bearing Housed Units-Eccentric Four-Bolt Pillow Block | QMPX34J615S



## Bearing No. QMPX34J615S

|                           |  |
|---------------------------|--|
| Weight                    | Imperial   |
| Bearing Number            | 3.09   |
| Housing Construction      | 2.08   |
| UPC Code                  | 395 lb179.2 Kg   |
| Shaft Size Type           | 0883450095822<br>0883450095839<br>0883450095853<br>0883450095860<br>0883450095877<br>0883450095884<br>0883450095891 08 |
| Full Timken Part Number   | 0.0050 in0.127 mm  |
| Locking Style             | 6-15/16 in   |
| Y2 - Geometry Factor      | 0.0047 in0.120 mm  |
| Y1 - Geometry Factor      | 0.0071 in0.180 mm  |
| Shaft Tolerance           | 900 rpm  |
| Shaft Size                | 600 rpm  |
| Pre Install Clearance Min | 350 rpm  |
| Pre Install Clearance Max | Eccentric  |