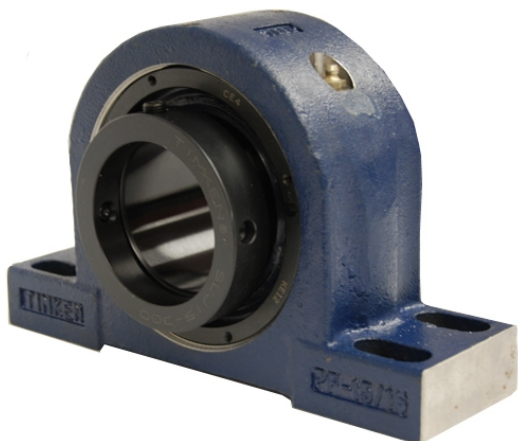


royal Bearing Housed Units-Eccentric Four-Bolt Pillow Block | QMPX34J607S



Bearing No. QMPX34J607S

Weight	Imperial
Bearing Number	3.09
Housing Construction	2.08
UPC Code	395 lb179.2 Kg
Shaft Size Type	0883450095624 0883450095631 0883450095655 0883450095662 0883450095679 0883450095686 0883450095693 08
Full Timken Part Number	0.0050 in0.127 mm
Locking Style	6-7/16 in
Y2 - Geometry Factor	0.0047 in0.120 mm
Y1 - Geometry Factor	0.0071 in0.180 mm
Shaft Tolerance	900 rpm
Shaft Size	600 rpm
Pre Install Clearance Min	350 rpm
Pre Install Clearance Max	Eccentric