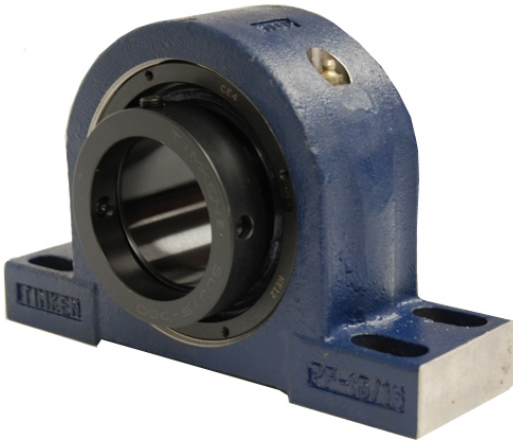


royal Bearing Housed Units-Eccentric Four-Bolt Pillow Block | QMPX30J150S



Bearing No. QMPX30J150S

Weight	Metric
Bearing Number	3.10
Housing Construction	2.08
UPC Code	250 lb113.4 Kg
Shaft Size Type	0883450034791 0883450034821 0883450252966 0883450253383 0883450262521 0883450262538 0883450262545 08
Full Timken Part Number	0.0050 in0.127 mm
Locking Style	150 mm
Y2 - Geometry Factor	0.0043 in0.110 mm
Y1 - Geometry Factor	0.0067 in0.170 mm
Shaft Tolerance	950 rpm
Shaft Size	650 rpm
Pre Install Clearance Min	350 rpm
Pre Install Clearance Max	Eccentric