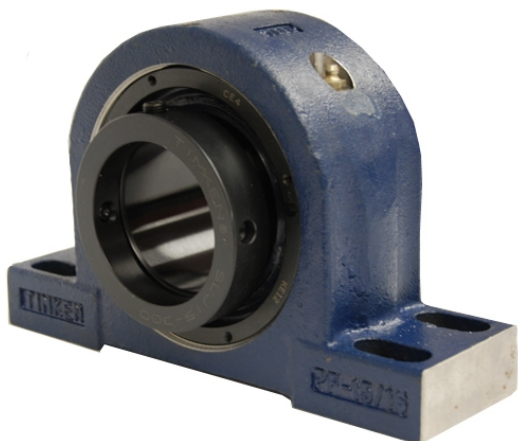


# royal Bearing Housed Units-Eccentric Four-Bolt Pillow Block | QMPX30J508S



## Bearing No. QMPX30J508S

Weight	Imperial
Bearing Number	3.10
Housing Construction	2.08
UPC Code	250 lb113.4 Kg
Shaft Size Type	0883450095327 0883450095334 0883450095358 0883450095365 0883450095372 0883450095389 0883450095396 08
Full Timken Part Number	0.0050 in0.127 mm
Locking Style	5-1/2 in
Y2 - Geometry Factor	0.0043 in0.110 mm
Y1 - Geometry Factor	0.0067 in0.170 mm
Shaft Tolerance	950 rpm
Shaft Size	650 rpm
Pre Install Clearance Min	350 rpm
Pre Install Clearance Max	Eccentric