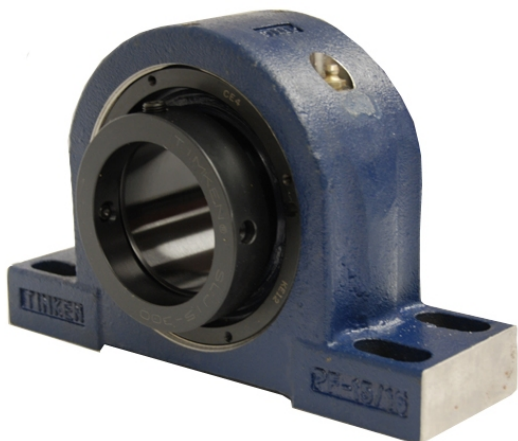


royal Bearing Housed Units-Eccentric Four-Bolt Pillow Block | QMPX30J140S



Bearing No. QMPX30J140S

Weight	Metric
Bearing Number	3.10
Housing Construction	2.08
UPC Code	250 lb113.4 Kg
Shaft Size Type	0883450159647 0883450159784 0883450159869 0883450159944 0883450160025 0883450160377 0883450160513 08
Full Timken Part Number	0.0050 in0.127 mm
Locking Style	140 mm
Y2 - Geometry Factor	0.0043 in0.110 mm
Y1 - Geometry Factor	0.0067 in0.170 mm
Shaft Tolerance	950 rpm
Shaft Size	650 rpm
Pre Install Clearance Min	350 rpm
Pre Install Clearance Max	Eccentric