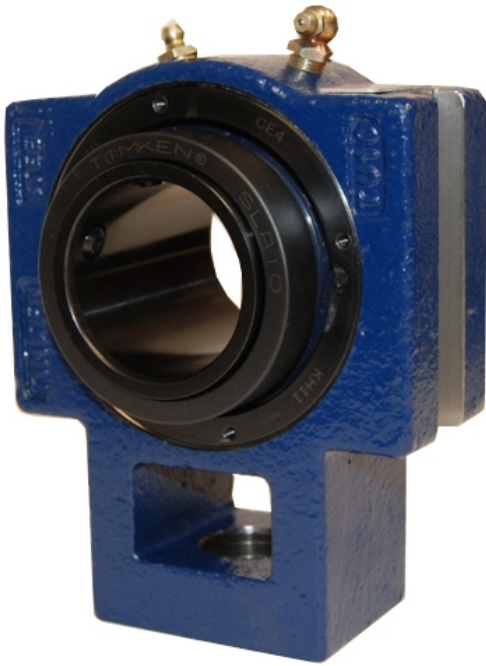


Bearing Housed Units-Single Concentric Take-Up Block | QATU20A315S



Bearing No. QATU20A315S

Weight	Imperial
Bearing Number	4.24
Housing Construction	2.85
UPC Code	58.0 lb26.3 Kg
Shaft Size Type	0883450051002 0883450051019 0883450051033 0883450051040 0883450051057 0883450051064 0883450051071 08
Full Timken Part Number	0.0030 in0.076 mm
Locking Style	3-15/16 in
Y2 - Geometry Factor	0.075 mm0.0030 in
Y1 - Geometry Factor	0.120 mm0.0047 in
Shaft Tolerance	2000 rpm
Shaft Size	1200 rpm
Pre Install Clearance Min	900 rpm
Pre Install Clearance Max	Single Concentric