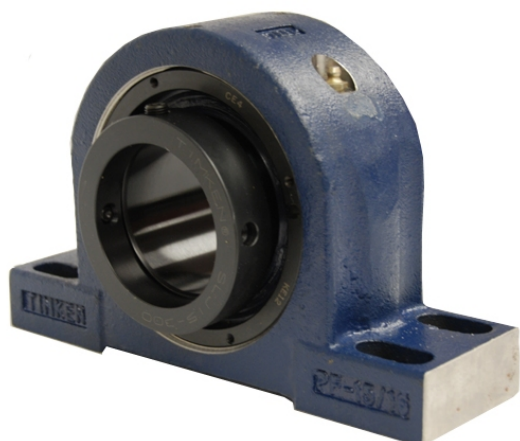


# royal Bearing Housed Units-Eccentric Four-Bolt Pillow Block | QMPX26J500S



## Bearing No. QMPX26J500S

Weight	Imperial
Bearing Number	3.90
Housing Construction	2.62
UPC Code	134 lb60.8 Kg
Shaft Size Type	0883450095129 0883450095136 0883450095150 0883450095167 0883450095174 0883450095181 0883450095198 08
Full Timken Part Number	0.0050 in0.127 mm
Locking Style	5 in
Y2 - Geometry Factor	0.0037 in0.095 mm
Y1 - Geometry Factor	0.0057 in0.145 mm
Shaft Tolerance	1500 rpm
Shaft Size	700 rpm
Pre Install Clearance Min	400 rpm
Pre Install Clearance Max	Eccentric