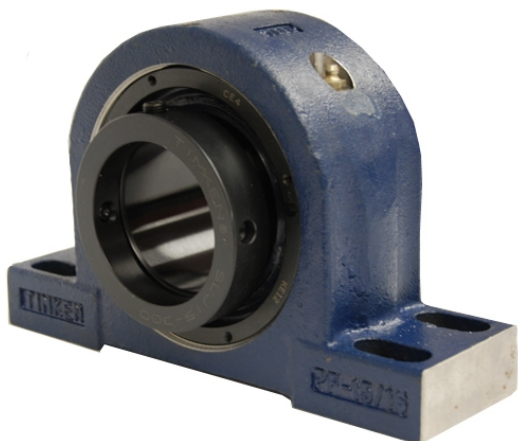


royal Bearing Housed Units-Eccentric Four-Bolt Pillow Block | QMPX26J130S



Bearing No. QMPX26J130S

Weight	Metric
Bearing Number	3.90
Housing Construction	2.62
UPC Code	134 lb60.8 Kg
Shaft Size Type	0883450252904 0883450329378 0883450329385 0883450329392 0883450329408 0883450329415 0883450329422 08
Full Timken Part Number	0.0050 in0.127 mm
Locking Style	130 mm
Y2 - Geometry Factor	0.0037 in0.095 mm
Y1 - Geometry Factor	0.0057 in0.145 mm
Shaft Tolerance	1500 rpm
Shaft Size	700 rpm
Pre Install Clearance Min	400 rpm
Pre Install Clearance Max	Eccentric