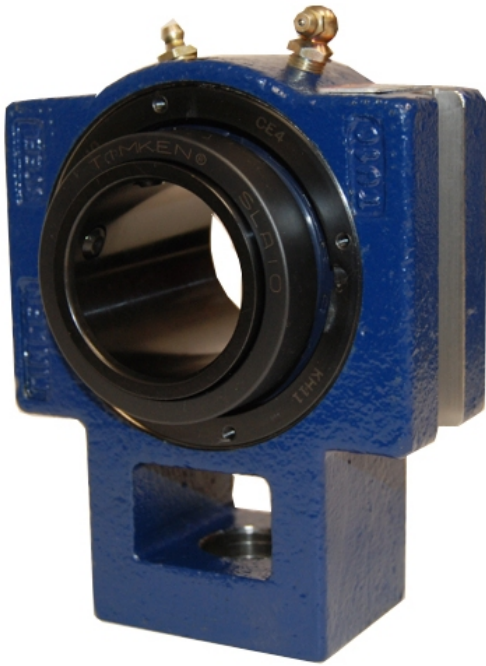


loyal Bearing Housed Units-Single Concentric Take-Up Block | QATU18A303S



Bearing No. QATU18A303S

Weight	Imperial
Bearing Number	4.31
Housing Construction	2.90
UPC Code	44 lb20.00 Kg
Shaft Size Type	0883450334440 0883450334457 0883450334464 0883450334471 0883450334488 0883450334495 0883450334501 08
Full Timken Part Number	0.0030 in0.076 mm
Locking Style	3-3/16 in
Y2 - Geometry Factor	0.060 mm0.0024 in
Y1 - Geometry Factor	0.100 mm0.0039 in
Shaft Tolerance	2400 rpm
Shaft Size	1400 rpm
Pre Install Clearance Min	1000 rpm
Pre Install Clearance Max	Single Concentric