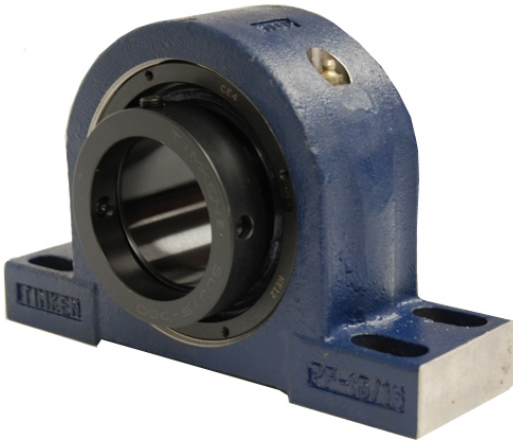


royal Bearing Housed Units-Eccentric Four-Bolt Pillow Block | QMPX20J315S



Bearing No. QMPX20J315S

Weight	Imperial
Bearing Number	4.24
Housing Construction	2.85
UPC Code	67 lb30.400 Kg
Shaft Size Type	0883450094528 0883450094535 0883450094559 0883450094566 0883450094573 0883450094580 0883450094597 08
Full Timken Part Number	0.0030 in0.076 mm
Locking Style	3-15/16 in
Y2 - Geometry Factor	0.0030 in0.075 mm
Y1 - Geometry Factor	0.0047 in0.120 mm
Shaft Tolerance	2000 rpm
Shaft Size	1200 rpm
Pre Install Clearance Min	900 rpm
Pre Install Clearance Max	Eccentric