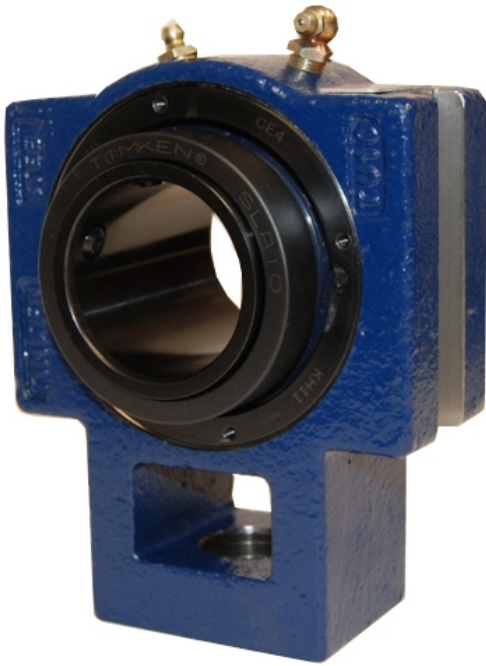


Bearing Housed Units-Single Concentric Take-Up Block | QATU15A212S



Bearing No. QATU15A212S

Weight	Imperial
Bearing Number	4.67
Housing Construction	3.14
UPC Code	35 lb15.90 Kg
Shaft Size Type	0883450334082 0883450334099 0883450334105 0883450334112 0883450334129 0883450334136 0883450334143 08
Full Timken Part Number	0.0020 in0.051 mm
Locking Style	2-3/4 in
Y2 - Geometry Factor	0.050 mm0.0020 in
Y1 - Geometry Factor	0.080 mm0.0031 in
Shaft Tolerance	2900 rpm
Shaft Size	1600 rpm
Pre Install Clearance Min	1300 rpm
Pre Install Clearance Max	Single Concentric