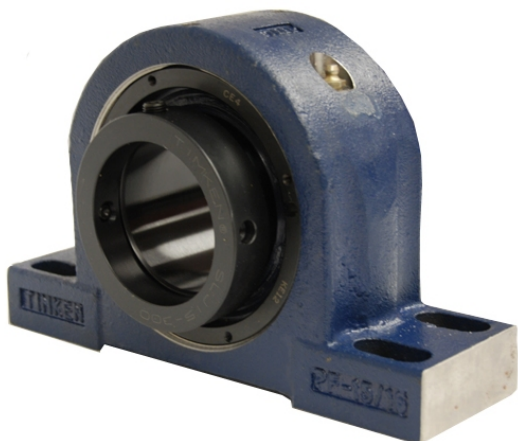


royal Bearing Housed Units-Eccentric Four-Bolt Pillow Block | QMPX18J308S



Bearing No. QMPX18J308S

Weight	Imperial
Bearing Number	4.31
Housing Construction	2.90
UPC Code	49.0 lb22.2 Kg
Shaft Size Type	0883450094122 0883450094139 0883450094153 0883450094160 0883450094177 0883450094184 0883450094191 08
Full Timken Part Number	0.0030 in0.076 mm
Locking Style	3-1/2 in
Y2 - Geometry Factor	0.0024 in0.060 mm
Y1 - Geometry Factor	0.0039 in0.100 mm
Shaft Tolerance	2400 rpm
Shaft Size	1400 rpm
Pre Install Clearance Min	1000 rpm
Pre Install Clearance Max	Eccentric