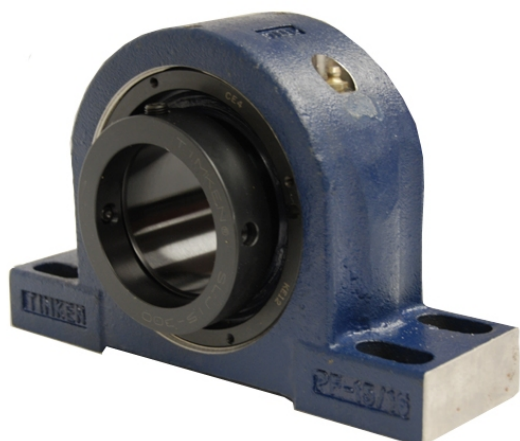


# royal Bearing Housed Units-Eccentric Four-Bolt Pillow Block | QMPX18J090S



## Bearing No. QMPX18J090S

|                           |  |
|---------------------------|--|
| Weight                    | Metric   |
| Bearing Number            | 4.31   |
| Housing Construction      | 2.90   |
| UPC Code                  | 49.0 lb22.2 Kg   |
| Shaft Size Type           | 0883450093729<br>0883450093736<br>0883450093750<br>0883450093767<br>0883450093774<br>0883450093781<br>0883450093798 08 |
| Full Timken Part Number   | 0.0030 in0.076 mm  |
| Locking Style             | 90 mm  |
| Y2 - Geometry Factor      | 0.0024 in0.060 mm  |
| Y1 - Geometry Factor      | 0.0039 in0.100 mm  |
| Shaft Tolerance           | 2400 rpm   |
| Shaft Size                | 1400 rpm   |
| Pre Install Clearance Min | 1000 rpm   |
| Pre Install Clearance Max | Eccentric  |