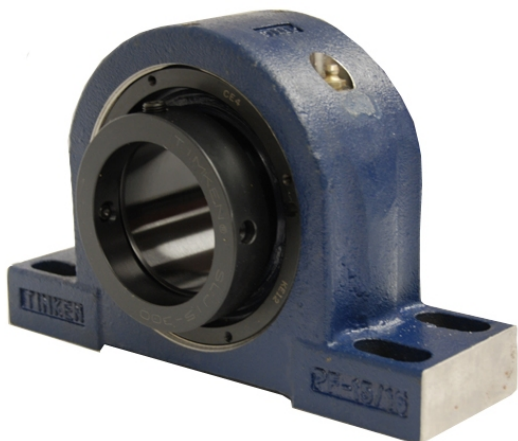


royal Bearing Housed Units-Eccentric Four-Bolt Pillow Block | QMPX18J085S



Bearing No. QMPX18J085S

Weight	Metric
Bearing Number	4.31
Housing Construction	2.90
UPC Code	49.0 lb22.2 Kg
Shaft Size Type	0883450159456 0883450159746 0883450159821 0883450159906 0883450159982 0883450160186 0883450160476 08
Full Timken Part Number	0.0030 in0.076 mm
Locking Style	85 mm
Y2 - Geometry Factor	0.0024 in0.060 mm
Y1 - Geometry Factor	0.0039 in0.100 mm
Shaft Tolerance	2400 rpm
Shaft Size	1400 rpm
Pre Install Clearance Min	1000 rpm
Pre Install Clearance Max	Eccentric