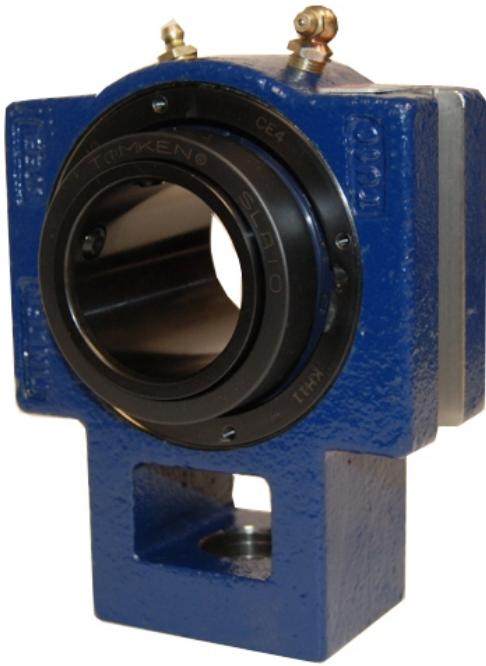


Bearing Housed Units-Single Concentric Take-Up Block | QATU11A203S



Bearing No. QATU11A203S

Weight	Imperial
Bearing Number	4.40
Housing Construction	2.95
UPC Code	21.0 lb9.5 Kg
Shaft Size Type	0883450049900 0883450049917 0883450049931 0883450049948 0883450049955 0883450049962 0883450049979 08
Full Timken Part Number	0.0015 in0.038 mm
Locking Style	2-3/16 in
Y2 - Geometry Factor	0.040 mm0.0016 in
Y1 - Geometry Factor	0.065 mm0.0026 in
Shaft Tolerance	3800 rpm
Shaft Size	2200 rpm
Pre Install Clearance Min	1600 rpm
Pre Install Clearance Max	Single Concentric