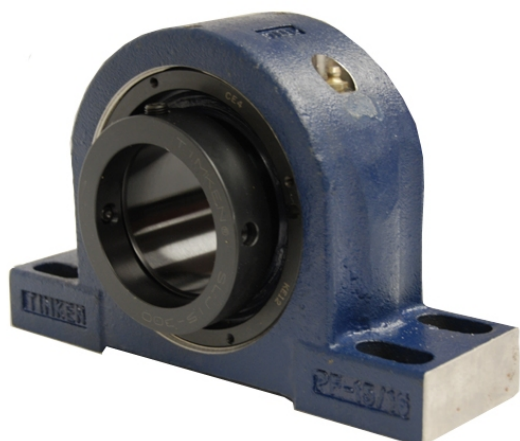


royal Bearing Housed Units-Eccentric Four-Bolt Pillow Block | QMPX15J215S



Bearing No. QMPX15J215S

Weight	Imperial
Bearing Number	4.67
Housing Construction	3.14
UPC Code	28 lb12.7 Kg
Shaft Size Type	0883450093422 0883450093439 0883450093453 0883450093460 0883450093477 0883450093484 0883450093491 08
Full Timken Part Number	0.0020 in0.051 mm
Locking Style	2-15/16 in
Y2 - Geometry Factor	0.0020 in0.050 mm
Y1 - Geometry Factor	0.0031 in0.080 mm
Shaft Tolerance	2900 rpm
Shaft Size	1600 rpm
Pre Install Clearance Min	1300 rpm
Pre Install Clearance Max	Eccentric