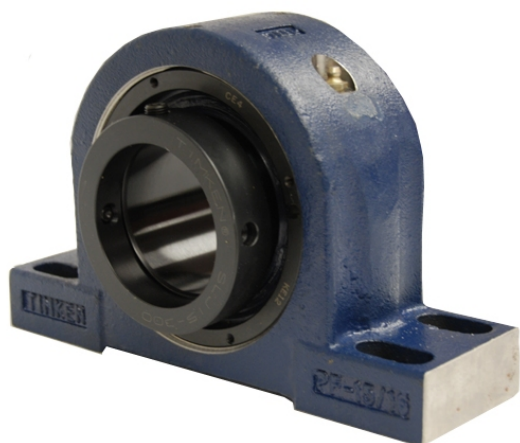


royal Bearing Housed Units-Eccentric Four-Bolt Pillow Block | QMPX15J211S



Bearing No. QMPX15J211S

Weight	Imperial
Bearing Number	4.67
Housing Construction	3.14
UPC Code	28 lb12.7 Kg
Shaft Size Type	0883450093224 0883450093231 0883450093255 0883450093262 0883450093279 0883450093286 0883450093293 08
Full Timken Part Number	0.0020 in0.051 mm
Locking Style	2-11/16 in
Y2 - Geometry Factor	0.0020 in0.050 mm
Y1 - Geometry Factor	0.0031 in0.080 mm
Shaft Tolerance	2900 rpm
Shaft Size	1600 rpm
Pre Install Clearance Min	1300 rpm
Pre Install Clearance Max	Eccentric