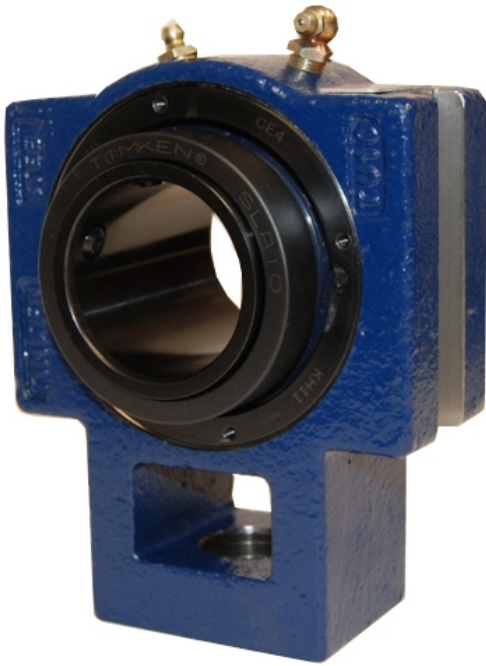


Bearing Housed Units-Single Concentric Take-Up Block | QATU10A050S



Bearing No. QATU10A050S

Weight	Metric
Bearing Number	4.23
Housing Construction	2.84
UPC Code	17.0 lb7.7 Kg
Shaft Size Type	0883450049603 0883450049610 0883450049634 0883450049641 0883450049658 0883450049665 0883450049672 08
Full Timken Part Number	0.0015 in0.038 mm
Locking Style	50 mm
Y2 - Geometry Factor	0.040 mm0.0016 in
Y1 - Geometry Factor	0.065 mm0.0026 in
Shaft Tolerance	4200 rpm
Shaft Size	2400 rpm
Pre Install Clearance Min	1800 rpm
Pre Install Clearance Max	Single Concentric