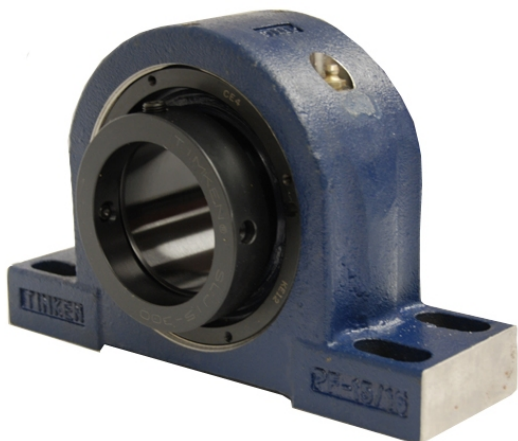


royal Bearing Housed Units-Eccentric Four-Bolt Pillow Block | QMPX13J207S



Bearing No. QMPX13J207S

Weight	Imperial
Bearing Number	4.15
Housing Construction	2.79
UPC Code	23 lb10.40 Kg
Shaft Size Type	0883450092821 0883450092838 0883450092852 0883450092869 0883450092876 0883450092883 0883450092890 08
Full Timken Part Number	0.0015 in0.038 mm
Locking Style	2-7/16 in
Y2 - Geometry Factor	0.0016 in0.040 mm
Y1 - Geometry Factor	0.0026 in0.065 mm
Shaft Tolerance	3200 rpm
Shaft Size	1800 rpm
Pre Install Clearance Min	1500 rpm
Pre Install Clearance Max	Eccentric