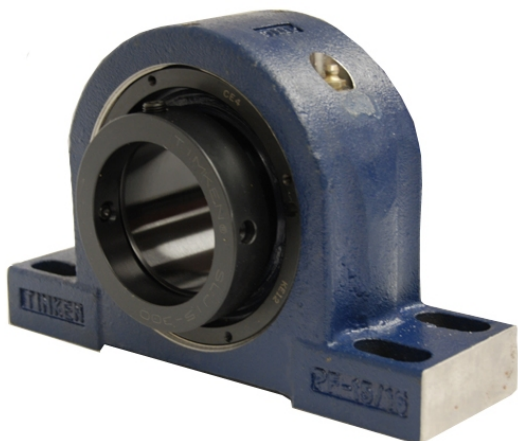


# royal Bearing Housed Units-Eccentric Four-Bolt Pillow Block | QMPR18J304S



## Bearing No. QMPR18J304S

Weight	Imperial
Bearing Number	4.31
Housing Construction	2.90
UPC Code	49.0 lb22.2 Kg
Shaft Size Type	0883450090629 0883450090636 0883450090650 0883450090667 0883450090674 0883450090681 0883450090698 08
Full Timken Part Number	0.0030 in0.076 mm
Locking Style	3-1/4 in
Y2 - Geometry Factor	0.0024 in0.060 mm
Y1 - Geometry Factor	0.0039 in0.100 mm
Shaft Tolerance	2400 rpm
Shaft Size	1400 rpm
Pre Install Clearance Min	1000 rpm
Pre Install Clearance Max	Eccentric