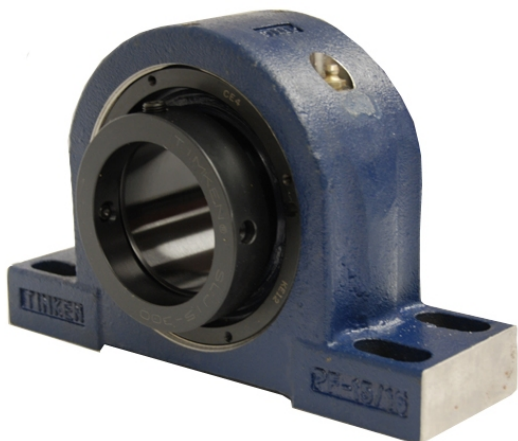


# royal Bearing Housed Units-Eccentric Four-Bolt Pillow Block | QMPR18J080S



## Bearing No. QMPR18J080S

Weight	Metric
Bearing Number	4.31
Housing Construction	2.90
UPC Code	49.0 lb22.2 Kg
Shaft Size Type	0883450090322 0883450090339 0883450090353 0883450090360 0883450090377 0883450090384 0883450090391 08
Full Timken Part Number	0.0030 in0.076 mm
Locking Style	80 mm
Y2 - Geometry Factor	0.0024 in0.060 mm
Y1 - Geometry Factor	0.0039 in0.100 mm
Shaft Tolerance	2400 rpm
Shaft Size	1400 rpm
Pre Install Clearance Min	1000 rpm
Pre Install Clearance Max	Eccentric