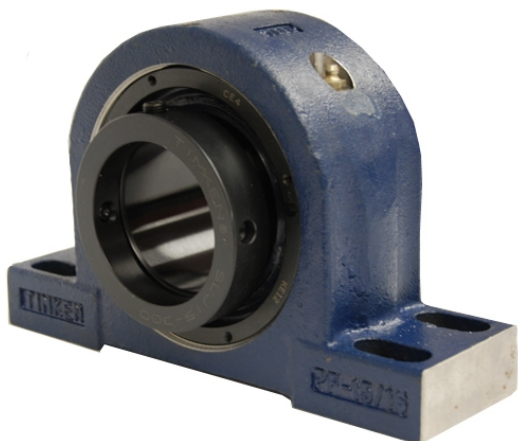


royal Bearing Housed Units-Eccentric Four-Bolt Pillow Block | QMPR18J090S



Bearing No. QMPR18J090S

Weight	Metric
Bearing Number	4.31
Housing Construction	2.90
UPC Code	49.0 lb22.2 Kg
Shaft Size Type	0883450090421 0883450090438 0883450090452 0883450090469 0883450090476 0883450090483 0883450090490 08
Full Timken Part Number	0.0030 in0.076 mm
Locking Style	90 mm
Y2 - Geometry Factor	0.0024 in0.060 mm
Y1 - Geometry Factor	0.0039 in0.100 mm
Shaft Tolerance	2400 rpm
Shaft Size	1400 rpm
Pre Install Clearance Min	1000 rpm
Pre Install Clearance Max	Eccentric