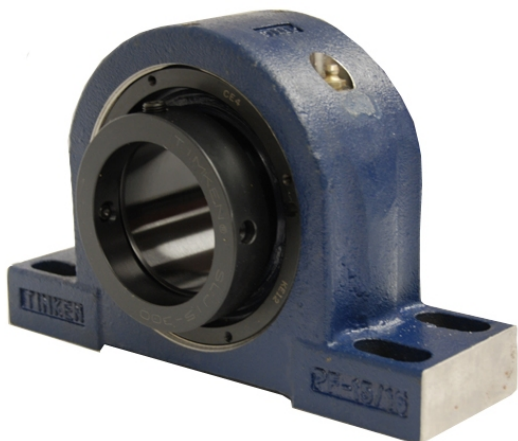


# royal Bearing Housed Units-Eccentric Four-Bolt Pillow Block | QMPR15J212S



## Bearing No. QMPR15J212S

|                           |  |
|---------------------------|--|
| Weight                    | Imperial   |
| Bearing Number            | 4.67   |
| Housing Construction      | 3.14   |
| UPC Code                  | 27 lb12.2 Kg   |
| Shaft Size Type           | 0883450090025<br>0883450090032<br>0883450090056<br>0883450090063<br>0883450090070<br>0883450090087<br>0883450090094 08 |
| Full Timken Part Number   | 0.0020 in0.051 mm  |
| Locking Style             | 2-3/4 in   |
| Y2 - Geometry Factor      | 0.0020 in0.050 mm  |
| Y1 - Geometry Factor      | 0.0031 in0.080 mm  |
| Shaft Tolerance           | 2900 rpm   |
| Shaft Size                | 1600 rpm   |
| Pre Install Clearance Min | 1300 rpm   |
| Pre Install Clearance Max | Eccentric  |