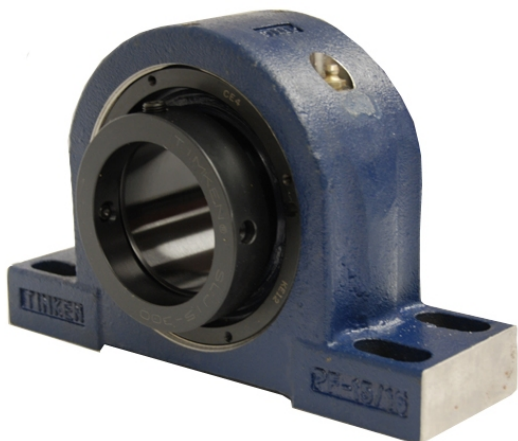


# royal Bearing Housed Units-Eccentric Four-Bolt Pillow Block | QMPH30J600S



## Bearing No. QMPH30J600S

Weight	Imperial
Bearing Number	3.10
Housing Construction	2.08
UPC Code	250 lb113.4 Kg
Shaft Size Type	0883450034036 0883450034043 0883450139083 0883450139090 0883450139106 0883450139113 0883450139144 08
Full Timken Part Number	0.0050 in0.127 mm
Locking Style	6 in
Y2 - Geometry Factor	0.0043 in0.110 mm
Y1 - Geometry Factor	0.0067 in0.170 mm
Shaft Tolerance	950 rpm
Shaft Size	650 rpm
Pre Install Clearance Min	350 rpm
Pre Install Clearance Max	Eccentric