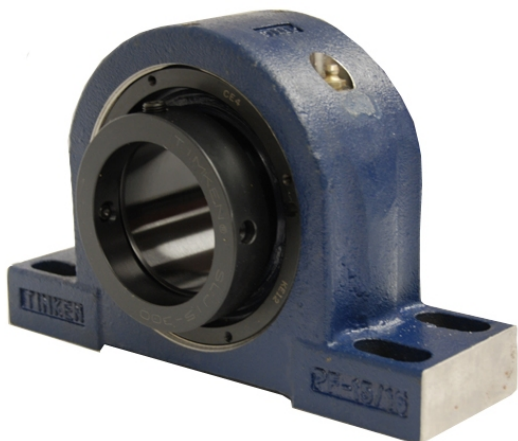


royal Bearing Housed Units-Eccentric Four-Bolt Pillow Block | QMPH26J500S



Bearing No. QMPH26J500S

Weight	Imperial
Bearing Number	3.90
Housing Construction	2.62
UPC Code	134 lb60.8 Kg
Shaft Size Type	0883450033848 0883450033855 0883450138581 0883450138598 0883450138604 0883450138611 0883450138642 08
Full Timken Part Number	0.0050 in0.127 mm
Locking Style	5 in
Y2 - Geometry Factor	0.0037 in0.095 mm
Y1 - Geometry Factor	0.0057 in0.145 mm
Shaft Tolerance	1500 rpm
Shaft Size	700 rpm
Pre Install Clearance Min	400 rpm
Pre Install Clearance Max	Eccentric