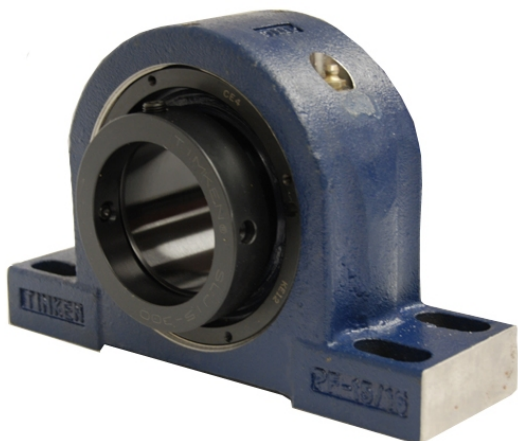


royal Bearing Housed Units-Eccentric Four-Bolt Pillow Block | QMPH26J125S



Bearing No. QMPH26J125S

Weight	Metric
Bearing Number	3.90
Housing Construction	2.62
UPC Code	134 lb60.8 Kg
Shaft Size Type	0883450033749 0883450033756 0883450138383 0883450138390 0883450138406 0883450138413 0883450138444 08
Full Timken Part Number	0.0050 in0.127 mm
Locking Style	125 mm
Y2 - Geometry Factor	0.0037 in0.095 mm
Y1 - Geometry Factor	0.0057 in0.145 mm
Shaft Tolerance	1500 rpm
Shaft Size	700 rpm
Pre Install Clearance Min	400 rpm
Pre Install Clearance Max	Eccentric