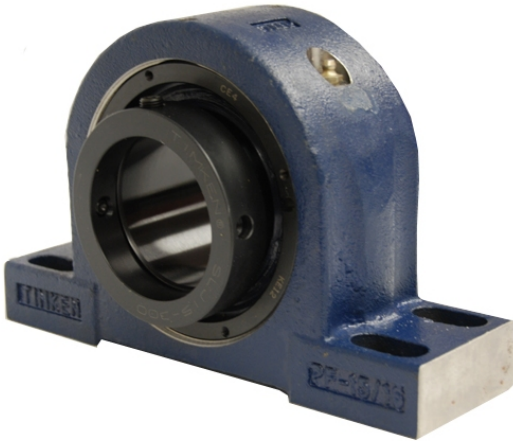


loyal Bearing Housed Units-Eccentric Four-Bolt Pillow Block | QMPG34J615S



Bearing No. QMPG34J615S

Weight	Imperial
Bearing Number	3.09
Housing Construction	2.08
UPC Code	375.0 lb170.1 Kg
Shaft Size Type	0883450252225 0883450252386 0883450262040 0883450262101 0883450262170 0883450262231 0883450262293 08
Full Timken Part Number	0.0050 in0.127 mm
Locking Style	6-15/16 in
Y2 - Geometry Factor	0.0047 in0.120 mm
Y1 - Geometry Factor	0.0071 in0.180 mm
Shaft Tolerance	900 rpm
Shaft Size	600 rpm
Pre Install Clearance Min	350 rpm
Pre Install Clearance Max	Eccentric