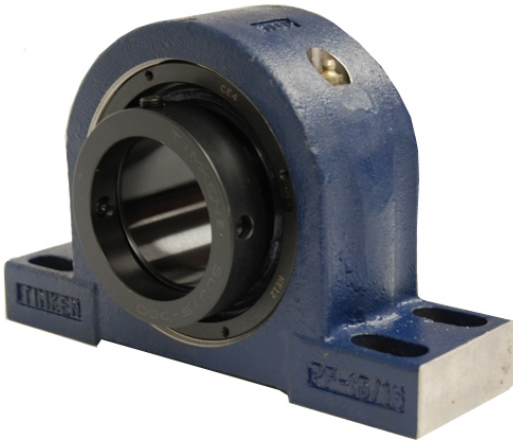


loyal Bearing Housed Units-Eccentric Four-Bolt Pillow Block | QMPG34J608S



Bearing No. QMPG34J608S

Weight	Imperial
Bearing Number	3.09
Housing Construction	2.08
UPC Code	375.0 lb170.1 Kg
Shaft Size Type	0883450252201 0883450252362 0883450262026 0883450262088 0883450262156 0883450262217 0883450262279 08
Full Timken Part Number	0.0050 in0.127 mm
Locking Style	6-1/2 in
Y2 - Geometry Factor	0.0047 in0.120 mm
Y1 - Geometry Factor	0.0071 in0.180 mm
Shaft Tolerance	900 rpm
Shaft Size	600 rpm
Pre Install Clearance Min	350 rpm
Pre Install Clearance Max	Eccentric