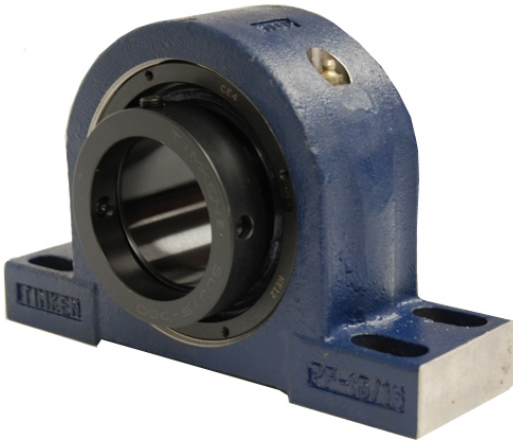


loyal Bearing Housed Units-Eccentric Four-Bolt Pillow Block | QMPG30J508S



Bearing No. QMPG30J508S

Weight	Imperial
Bearing Number	3.10
Housing Construction	2.08
UPC Code	250 lb113.4 Kg
Shaft Size Type	0883450033244 0883450033251 0883450140072 0883450140089 0883450140096 0883450140102 0883450140133 08
Full Timken Part Number	0.0050 in0.127 mm
Locking Style	5-1/2 in
Y2 - Geometry Factor	0.0043 in0.110 mm
Y1 - Geometry Factor	0.0067 in0.170 mm
Shaft Tolerance	950 rpm
Shaft Size	650 rpm
Pre Install Clearance Min	350 rpm
Pre Install Clearance Max	Eccentric