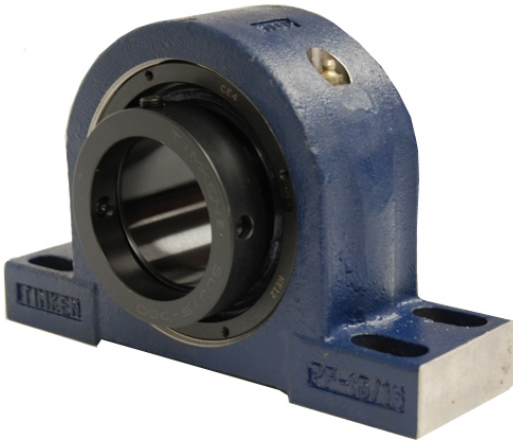


loyal Bearing Housed Units-Eccentric Four-Bolt Pillow Block | QMPG26J500S



Bearing No. QMPG26J500S

Weight	Imperial
Bearing Number	3.90
Housing Construction	2.62
UPC Code	134 lb60.8 Kg
Shaft Size Type	0883450139786 0883450139793 0883450139809 0883450139816 0883450139847 0883450139854 0883450158343 08
Full Timken Part Number	0.0050 in0.127 mm
Locking Style	5 in
Y2 - Geometry Factor	0.0037 in0.095 mm
Y1 - Geometry Factor	0.0057 in0.145 mm
Shaft Tolerance	1500 rpm
Shaft Size	700 rpm
Pre Install Clearance Min	400 rpm
Pre Install Clearance Max	Eccentric