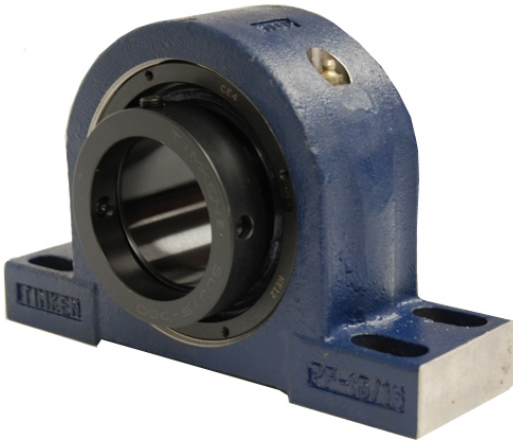


loyal Bearing Housed Units-Eccentric Four-Bolt Pillow Block | QMPG26J125S



Bearing No. QMPG26J125S

Weight	Metric
Bearing Number	3.90
Housing Construction	2.62
UPC Code	134 lb60.8 Kg
Shaft Size Type	0883450139588 0883450139595 0883450139601 0883450139618 0883450139649 0883450139656 0883450158329 08
Full Timken Part Number	0.0050 in0.127 mm
Locking Style	125 mm
Y2 - Geometry Factor	0.0037 in0.095 mm
Y1 - Geometry Factor	0.0057 in0.145 mm
Shaft Tolerance	1500 rpm
Shaft Size	700 rpm
Pre Install Clearance Min	400 rpm
Pre Install Clearance Max	Eccentric