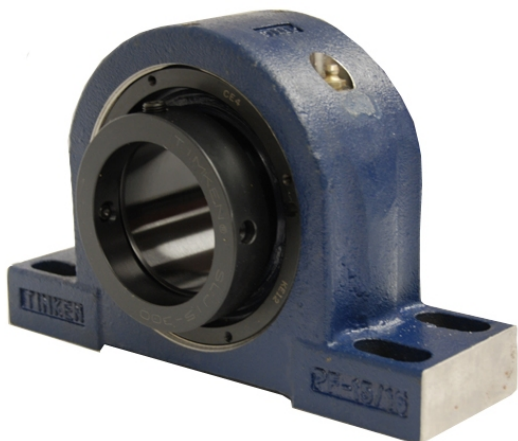


royal Bearing Housed Units-Eccentric Four-Bolt Pillow Block | QMPF30J515S



Bearing No. QMPF30J515S

Weight	Imperial
Bearing Number	3.10
Housing Construction	2.08
UPC Code	250 lb113.4 Kg
Shaft Size Type	0883450085922 0883450085939 0883450085953 0883450085960 0883450085977 0883450085984 0883450085991 08
Full Timken Part Number	0.0050 in0.127 mm
Locking Style	5-15/16 in
Y2 - Geometry Factor	0.0043 in0.110 mm
Y1 - Geometry Factor	0.0067 in0.170 mm
Shaft Tolerance	950 rpm
Shaft Size	650 rpm
Pre Install Clearance Min	350 rpm
Pre Install Clearance Max	Eccentric