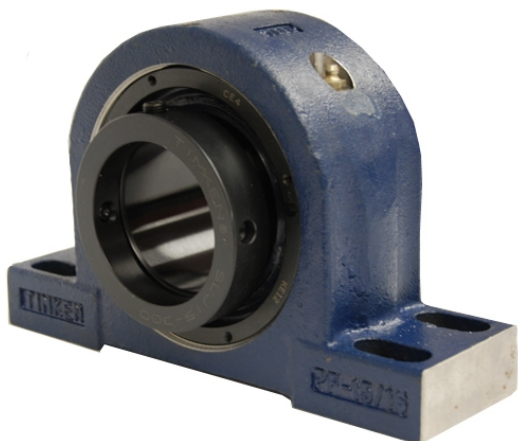


royal Bearing Housed Units-Eccentric Four-Bolt Pillow Block | QMPF26J500S



Bearing No. QMPF26J500S

Weight	Imperial
Bearing Number	3.90
Housing Construction	2.62
UPC Code	134 lb60.8 Kg
Shaft Size Type	0883450085625 0883450085632 0883450085656 0883450085663 0883450085670 0883450085687 0883450085694 08
Full Timken Part Number	0.0050 in0.127 mm
Locking Style	5 in
Y2 - Geometry Factor	0.0037 in0.095 mm
Y1 - Geometry Factor	0.0057 in0.145 mm
Shaft Tolerance	1500 rpm
Shaft Size	700 rpm
Pre Install Clearance Min	400 rpm
Pre Install Clearance Max	Eccentric