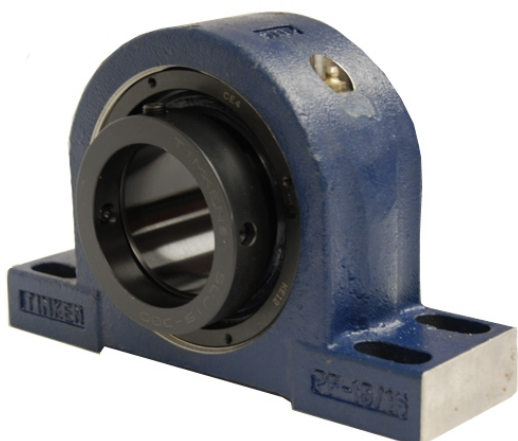


royal Bearing Housed Units-Eccentric Four-Bolt Pillow Block | QMPF20J311S



Bearing No. QMPF20J311S

Weight	Imperial
Bearing Number	4.24
Housing Construction	2.85
UPC Code	67 lb30.400 Kg
Shaft Size Type	0883450084826 0883450084833 0883450084857 0883450084864 0883450084871 0883450084888 0883450084895 08
Full Timken Part Number	0.0030 in0.076 mm
Locking Style	3-11/16 in
Y2 - Geometry Factor	0.0030 in0.075 mm
Y1 - Geometry Factor	0.0047 in0.120 mm
Shaft Tolerance	2000 rpm
Shaft Size	1200 rpm
Pre Install Clearance Min	900 rpm
Pre Install Clearance Max	Eccentric