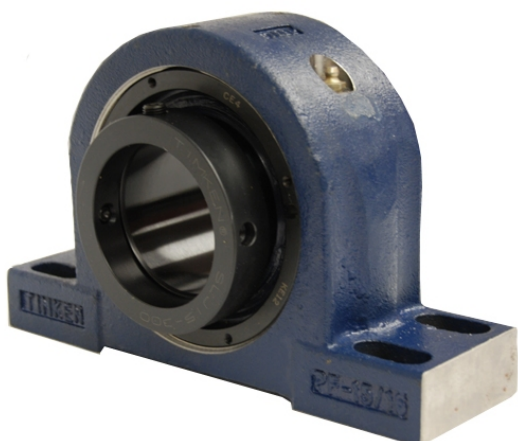


royal Bearing Housed Units-Eccentric Four-Bolt Pillow Block | QMPF18J307S



Bearing No. QMPF18J307S

Weight	Imperial
Bearing Number	4.31
Housing Construction	2.90
UPC Code	49.0 lb22.2 Kg
Shaft Size Type	0883450084529 0883450084536 0883450084550 0883450084567 0883450084574 0883450084581 0883450084598 08
Full Timken Part Number	0.0030 in0.076 mm
Locking Style	3-7/16 in
Y2 - Geometry Factor	0.0024 in0.060 mm
Y1 - Geometry Factor	0.0039 in0.100 mm
Shaft Tolerance	2400 rpm
Shaft Size	1400 rpm
Pre Install Clearance Min	1000 rpm
Pre Install Clearance Max	Eccentric