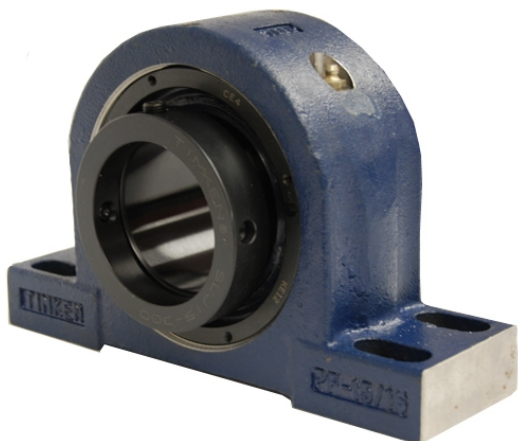


royal Bearing Housed Units-Eccentric Four-Bolt Pillow Block | QMPF18J080S



Bearing No. QMPF18J080S

Weight	Metric
Bearing Number	4.31
Housing Construction	2.90
UPC Code	49.0 lb22.2 Kg
Shaft Size Type	0883450084123 0883450084130 0883450084154 0883450084161 0883450084178 0883450084185 0883450084192 08
Full Timken Part Number	0.0030 in0.076 mm
Locking Style	80 mm
Y2 - Geometry Factor	0.0024 in0.060 mm
Y1 - Geometry Factor	0.0039 in0.100 mm
Shaft Tolerance	2400 rpm
Shaft Size	1400 rpm
Pre Install Clearance Min	1000 rpm
Pre Install Clearance Max	Eccentric