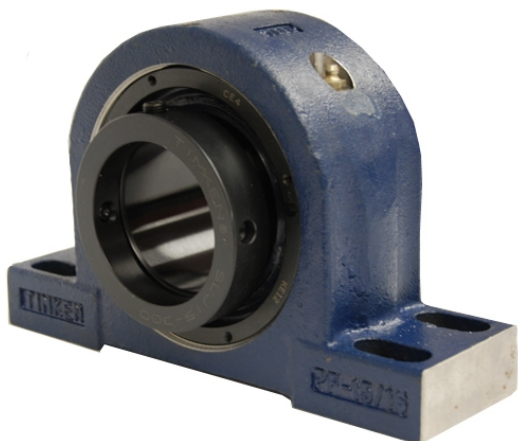


royal Bearing Housed Units-Eccentric Four-Bolt Pillow Block | QMPF15J212S



Bearing No. QMPF15J212S

Weight	Imperial
Bearing Number	4.67
Housing Construction	3.14
UPC Code	27 lb12.2 Kg
Shaft Size Type	0883450083829 0883450083836 0883450083850 0883450083867 0883450083874 0883450083881 0883450083898 08
Full Timken Part Number	0.0020 in0.051 mm
Locking Style	2-3/4 in
Y2 - Geometry Factor	0.0020 in0.050 mm
Y1 - Geometry Factor	0.0031 in0.080 mm
Shaft Tolerance	2900 rpm
Shaft Size	1600 rpm
Pre Install Clearance Min	1300 rpm
Pre Install Clearance Max	Eccentric