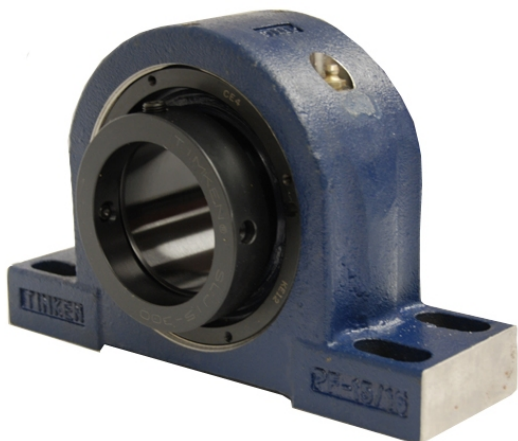


royal Bearing Housed Units-Eccentric Four-Bolt Pillow Block | QMPF15J211S



Bearing No. QMPF15J211S

Weight	Imperial
Bearing Number	4.67
Housing Construction	3.14
UPC Code	27 lb12.2 Kg
Shaft Size Type	0883450083720 0883450083737 0883450083751 0883450083768 0883450083775 0883450083782 0883450083799 08
Full Timken Part Number	0.0020 in0.051 mm
Locking Style	2-11/16 in
Y2 - Geometry Factor	0.0020 in0.050 mm
Y1 - Geometry Factor	0.0031 in0.080 mm
Shaft Tolerance	2900 rpm
Shaft Size	1600 rpm
Pre Install Clearance Min	1300 rpm
Pre Install Clearance Max	Eccentric