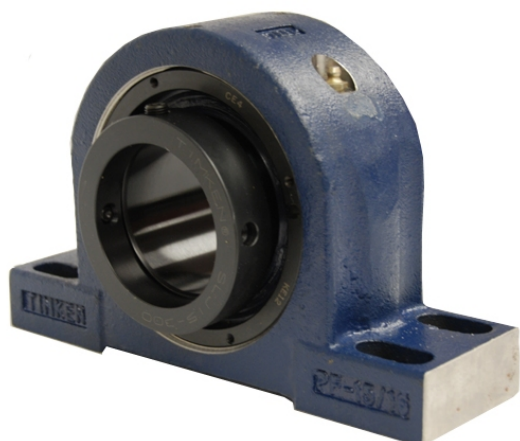


royal Bearing Housed Units-Eccentric Four-Bolt Pillow Block | QMPF15J070S



Bearing No. QMPF15J070S

Weight	Metric
Bearing Number	4.67
Housing Construction	3.14
UPC Code	27 lb12.2 Kg
Shaft Size Type	0883450083522 0883450083539 0883450083553 0883450083560 0883450083577 0883450083584 0883450083591 08
Full Timken Part Number	0.0020 in0.051 mm
Locking Style	70 mm
Y2 - Geometry Factor	0.0020 in0.050 mm
Y1 - Geometry Factor	0.0031 in0.080 mm
Shaft Tolerance	2900 rpm
Shaft Size	1600 rpm
Pre Install Clearance Min	1300 rpm
Pre Install Clearance Max	Eccentric